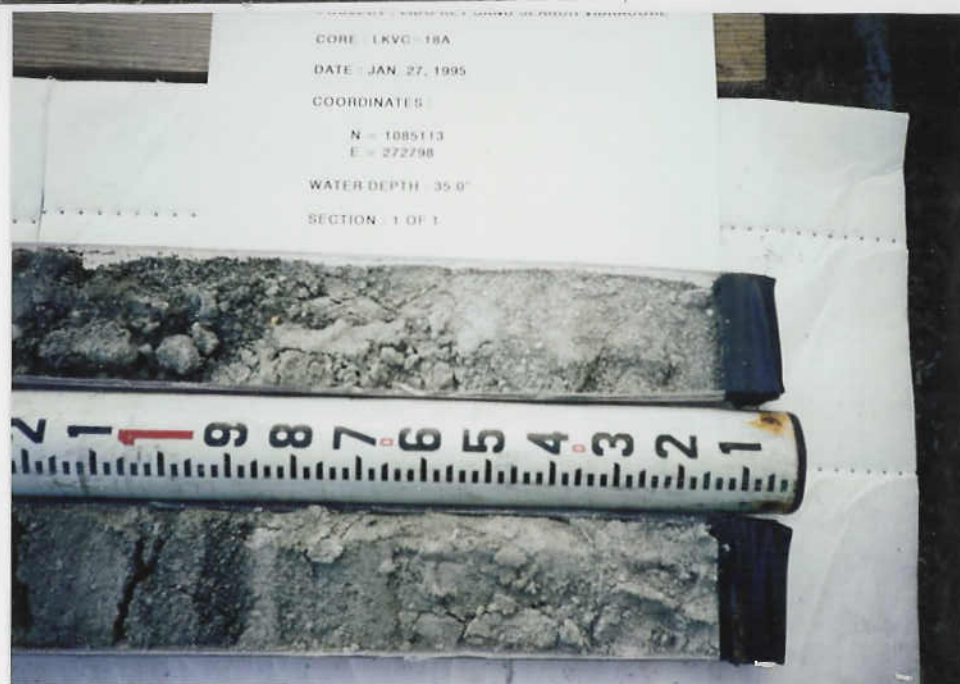


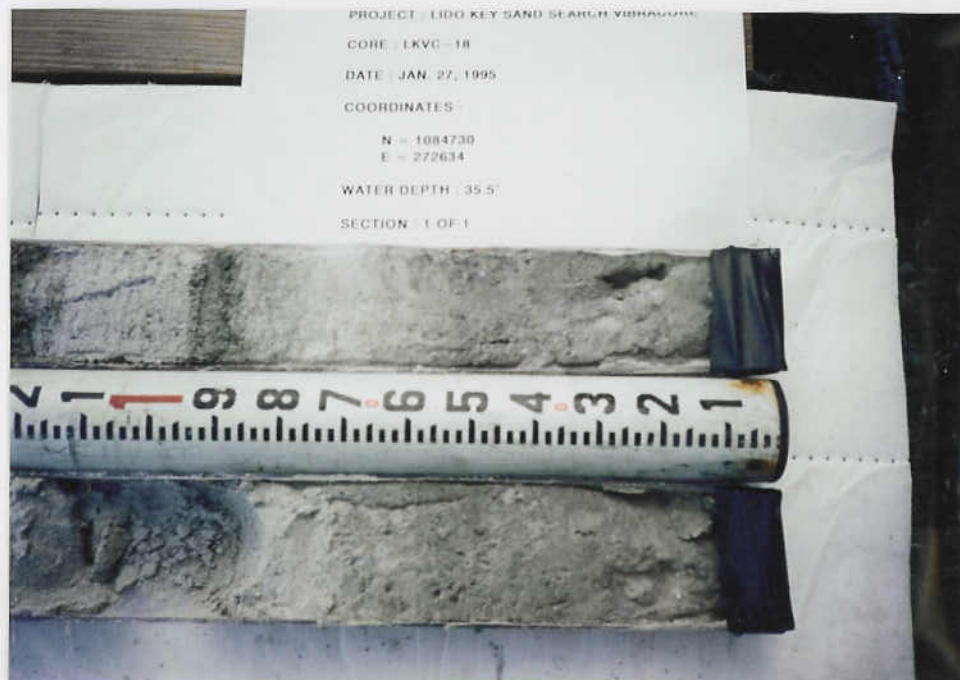
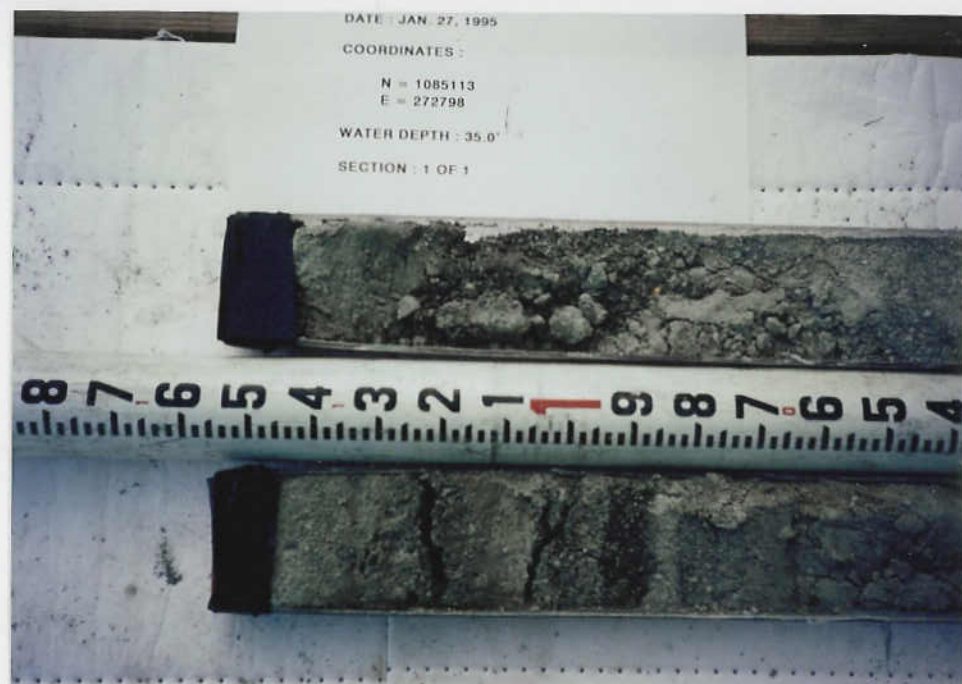
VIBRACORE LOG						
PROJECT: LIDO KEY SAND SEARCH BORROW AREA 4    CORE NO: LKVC - 18A						
COORINATES: N = 1085113 E = 272798	DATE: JAN. 27, 1995 START TIME: 1453 END TIME: 1502	WATER DEPTH: 35.0 Ft. NGVD DRILLER: EXMAR CLIENT REP: M. D. ANDREWS				
CORE DIAMETER: 2.5"	ELEV.	DEPTH	LEGEND	DESCRIPTION	SAMP NO.	REMARKS
LENGTH OF BARREL: 12.0'	35.0'	0.0		GRAY (N6), FINE / MEDIUM LIGHT GREENISH GRAY (10Y 7/1) FINE / MEDIUM		
PENETRATION DEPTH: 5.5'						
LENGTH RECOVERED: 1.7'						
LENGTH RETAINED : 1.6'	36.6'	1.6				
SUPPORT VESSEL: EXMAR II						
POSITIONING: DGPS MOTOROLA LGT 1000 / USCG BEACON		2.5	NOT RECOVERED			
WEATHER:						
WIND:						
DIR: VAR.						
SPEED: LIGHT						
WAVES:						
DIR: VAR.						
HEIGHT: 0 - 1 Ft.		5.0				
CURRENT:						
DIR: SOUTH		40.5'	5.5	X X X X X	ROCK	
SPEED: LIGHT						
ANALYSIS BY: MDA						
ANALYSIS METHOD:						
VISUAL LOGGING						
MECHANICAL SIEVE		7.5				
SAND						
SHELLS						
ROCK FRAG.						
SHELL HASH						
ROCK						
X X X X X		10.0				

NOTE: MEAN WAS CALCULATED USING MOMENT METHOD  
 NOTE: COORDINATE SYSTEM - FLORIDA STATE PLANE NAD 1927  
 NOTE : CORE WEIGHTED COMPOSITE 0. mm

**COASTAL PLANNING & ENGINEERING, INC**



LKVC-18A



LKVC-18

