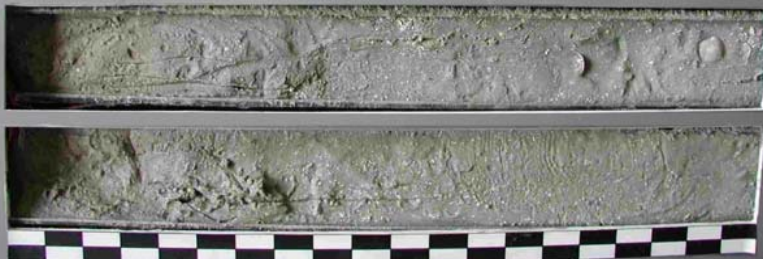
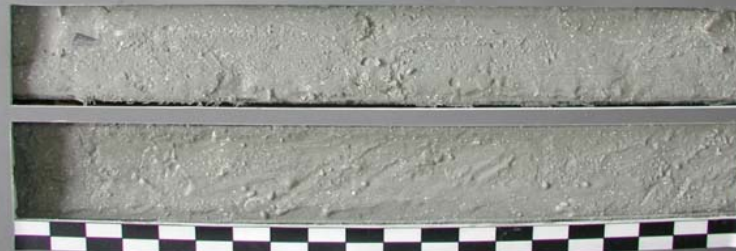


COLLIER COUNTY
CCVC-03-11
0.0' - 2.0'



COASTAL PLANNING & ENGINEERING, INC.

COLLIER COUNTY
CCVC-03-11
2.0' - 4.0'



COASTAL PLANNING & ENGINEERING, INC.

COLLIER COUNTY
CCVC-03-11
4.0' - 6.0'



COASTAL PLANNING & ENGINEERING, INC.

COLLIER COUNTY
CCVC-03-11
6.0' - 7.5'



COASTAL PLANNING & ENGINEERING, INC.