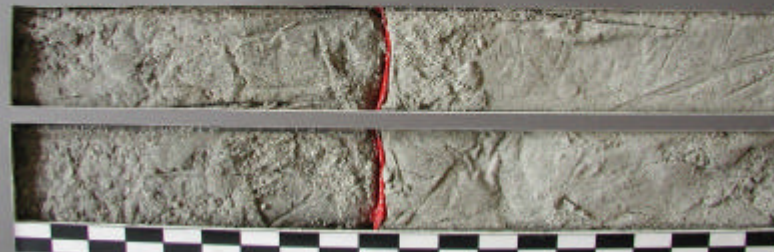


COLLIER COUNTY
CCVC-03-43
0.0' - 2.0'



COASTAL PLANNING & ENGINEERING, INC.

COLLIER COUNTY
CCVC-03-43
2.0' - 4.0'



COASTAL PLANNING & ENGINEERING, INC.

COLLIER COUNTY
CCVC-03-43
4.0' - 6.0'



COASTAL PLANNING & ENGINEERING, INC.

COLLIER COUNTY
CCVC-03-43
6.0' - 8.0'



COASTAL PLANNING & ENGINEERING, INC.

COLLIER COUNTY
CCVC-03-43
8.0' - 10.0'



COASTAL PLANNING & ENGINEERING, INC.

COLLIER COUNTY
CCVC-03-43
10.0' - 12.0'



COASTAL PLANNING & ENGINEERING, INC.

COLLIER COUNTY
CCVC-03-43
12.0' - 14.0'



COASTAL PLANNING & ENGINEERING, INC.

COLLIER COUNTY
CCVC-03-43
14.0' - 16.0'



COASTAL PLANNING & ENGINEERING, INC.

COLLIER COUNTY
CCVC-03-43
16.0' - 17.7'



COASTAL PLANNING & ENGINEERING, INC.