

COLLIER COUNTY
CCVC-03-22
0.0' - 2.0'



COASTAL PLANNING & ENGINEERING, INC.

COLLIER COUNTY
CCVC-03-22
2.0' - 4.0'



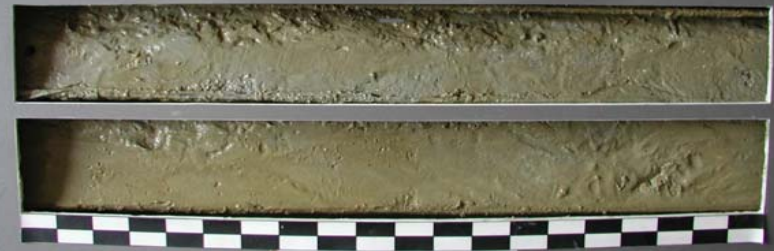
COASTAL PLANNING & ENGINEERING, INC.

COLLIER COUNTY
CCVC-03-22
4.0' - 6.0'



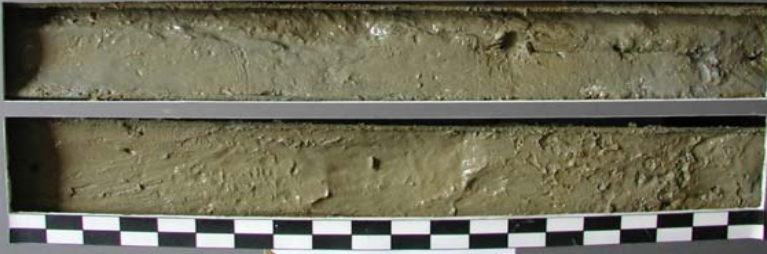
COASTAL PLANNING & ENGINEERING, INC.

COLLIER COUNTY
CCVC-03-22
6.0' - 8.0'



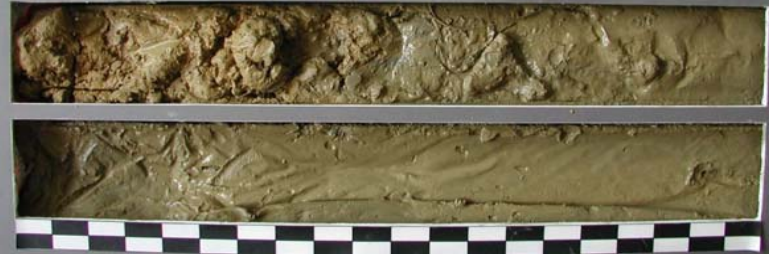
COASTAL PLANNING & ENGINEERING, INC.

COLLIER COUNTY
CCVC-03-22
8.0' - 10.0'



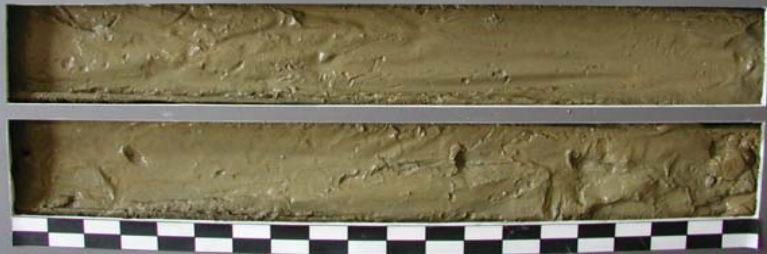
COASTAL PLANNING & ENGINEERING, INC.

COLLIER COUNTY
CCVC-03-22
10.0' - 12.0'



COASTAL PLANNING & ENGINEERING, INC.

COLLIER COUNTY
CCVC-03-22
12.0' - 14.0'



COASTAL PLANNING & ENGINEERING, INC.

COLLIER COUNTY
CCVC-03-22
14.0' - 14.5'



COASTAL PLANNING & ENGINEERING, INC.