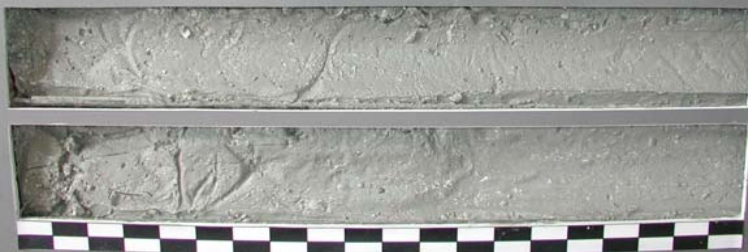
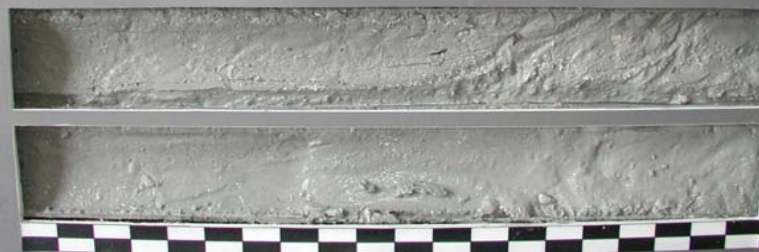


COLLIER COUNTY
CCVC-03-09
0.0' - 2.0'



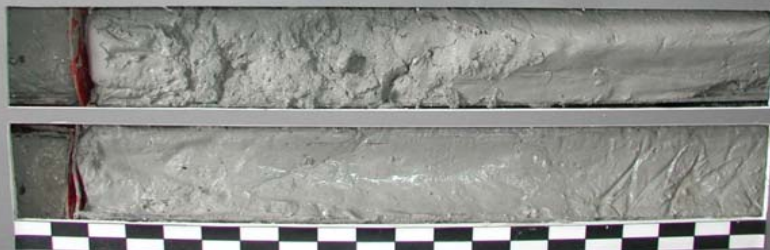
COASTAL PLANNING & ENGINEERING, INC.

COLLIER COUNTY
CCVC-03-09
2.0' - 4.0'



COASTAL PLANNING & ENGINEERING, INC.

COLLIER COUNTY
CCVC-03-09
4.0' - 6.0'



COASTAL PLANNING & ENGINEERING, INC.

COLLIER COUNTY
CCVC-03-09
6.0' - 8.0'



COASTAL PLANNING & ENGINEERING, INC.

COLLIER COUNTY
CCVC-03-09
8.0' - 10.0'



COASTAL PLANNING & ENGINEERING, INC.

COLLIER COUNTY
CCVC-03-09
10.0' - 12.0'



COASTAL PLANNING & ENGINEERING, INC.

COLLIER COUNTY
CCVC-03-09
12.0' - 14.0'



COASTAL PLANNING & ENGINEERING, INC.

COLLIER COUNTY
CCVC-03-09
14.0' - 16.0'



COASTAL PLANNING & ENGINEERING, INC.

