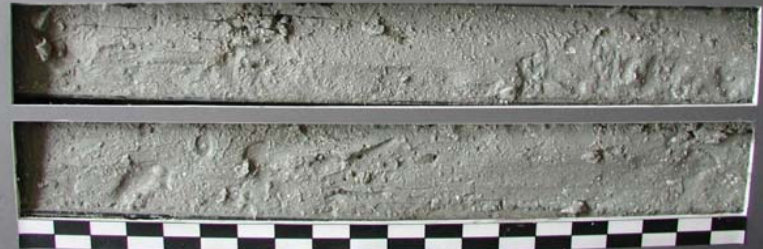


COLLIER COUNTY
CCVC-03-10
0.0' - 2.0'



COASTAL PLANNING & ENGINEERING, INC.

COLLIER COUNTY
CCVC-03-10
2.0' - 4.0'



COASTAL PLANNING & ENGINEERING, INC.

COLLIER COUNTY
CCVC-03-10
4.0' - 6.0'



COASTAL PLANNING & ENGINEERING, INC.

COLLIER COUNTY
CCVC-03-10
6.0' - 8.0'



COASTAL PLANNING & ENGINEERING, INC.

COLLIER COUNTY
CCVC-03-10
8.0' - 9.8'



COASTAL PLANNING & ENGINEERING, INC.