

MARCO PASS
MPVC-03-02
0.0 - 2.0



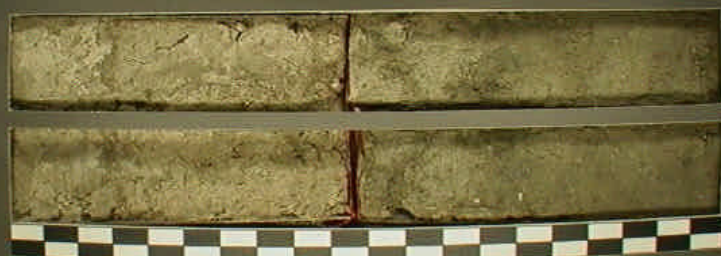
COASTAL PLANNING & ENGINEERING, INC.

MARCO PASS
MPVC-03-02
2.0 - 4.0



COASTAL PLANNING & ENGINEERING, INC.

MARCO PASS
MPVC-03-02
4.0 - 6.0



COASTAL PLANNING & ENGINEERING, INC.

MARCO PASS
MPVC-03-02
6.0 - 8.0



COASTAL PLANNING & ENGINEERING, INC.



MARCO PASS
MPVC-03-02
16.0 -16.6



COASTAL PLANNING & ENGINEERING, INC.