

MARCO PASS
MPVC-03-13
0.0 - 2.0



COASTAL PLANNING & ENGINEERING, INC.

MARCO PASS
MPVC-03-13
2.0 - 4.0



COASTAL PLANNING & ENGINEERING, INC.

MARCO PASS
MPVC-03-13
4.0 - 6.0



COASTAL PLANNING & ENGINEERING, INC.

MARCO PASS
MPVC-03-13
6.0 - 8.0



COASTAL PLANNING & ENGINEERING, INC.

MARCO PASS
MPVC-03-13
8.0 - 10.0



COASTAL PLANNING & ENGINEERING, INC.

MARCO PASS
MPVC-03-13
10.0 - 12.0



COASTAL PLANNING & ENGINEERING, INC.

MARCO PASS
MPVC-03-13
12.0 - 14.0



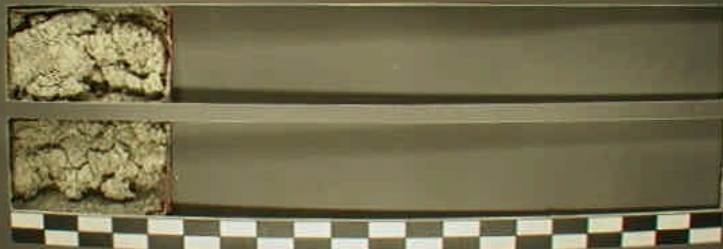
COASTAL PLANNING & ENGINEERING, INC.

MARCO PASS
MPVC-03-13
14.0 - 16.0



COASTAL PLANNING & ENGINEERING, INC.

MARCO PASS
MPVC-03-13
16.0 - 16.4



CRATER PLANNING & ENGINEERING, INC.