



MARCO PASS
MPVC-03-09
8.0 -10.0



COASTAL PLANNING & ENGINEERING, INC.

MARCO PASS
MPVC-03-09
10.0 -12.0



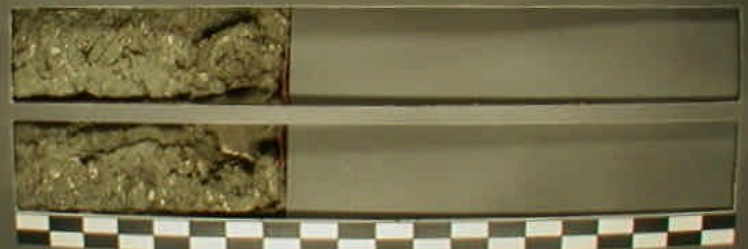
COASTAL PLANNING & ENGINEERING, INC.

MARCO PASS
MPVC-03-09
12.0 -14.0



COASTAL PLANNING & ENGINEERING, INC.

MARCO PASS
MPVC-03-09
14.0 -14.7



COASTAL PLANNING & ENGINEERING, INC.